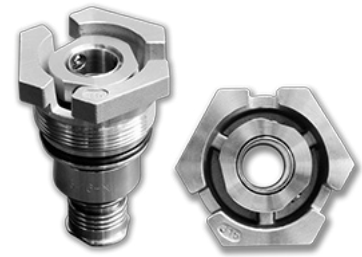
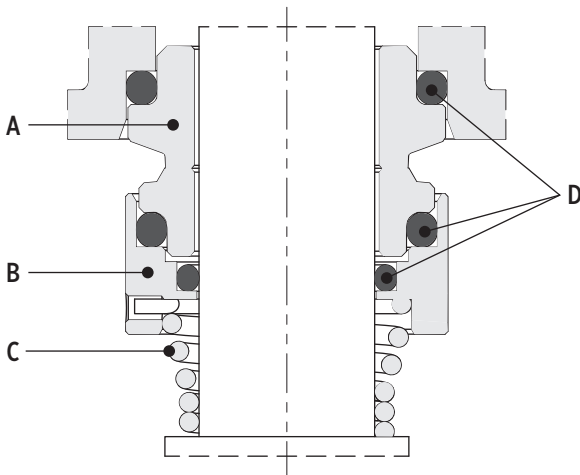


CARTRIDGE MECHANICAL SEAL SPECIFICATIONS

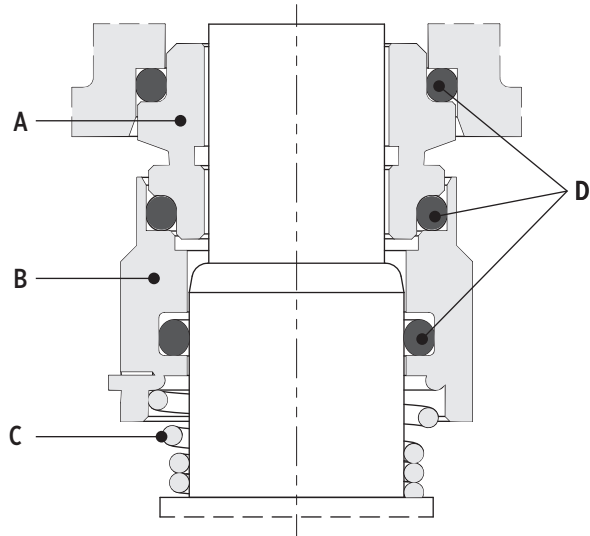
(fixed and rotating parts according to EN 12756)



UNBALANCED



BALANCED



00780241 02/2021

STANDARD VERSION (UNBALANCED)

| Model | Type | | | | Position | | | | Temperature |
|-------|------|---|---|---|----------------------|--------------------|-------------|-----------------|------------------|
| | | | | | A Stationary part | B Rotating part | C Spring | D Elastomers | |
| E1* | B | Q | G | E | Graphite | Silicon carbide | AISI 316 | EPDM | -30 °C / +120 °C |

AVAILABLE ON REQUEST

| Model | Type | | | | Position | | | | Temperature |
|-------|------|---|---|---|----------------------|--------------------|-------------|-----------------|------------------|
| | | | | | A Stationary part | B Rotating part | C Spring | D Elastomers | |
| E2* | Q | Q | G | E | Silicon carbide | Silicon carbide | AISI 316 | EPDM | -30 °C / +120 °C |
| V3* | Q | Q | G | V | Silicon carbide | Silicon carbide | AISI 316 | FKM | -10 °C / +120 °C |
| V4* | B | Q | G | V | Graphite | Silicon carbide | AISI 316 | FKM | -10 °C / +120 °C |
| E5* | U | U | G | E | Tungsten carbide | Tungsten carbide | AISI 316 | EPDM | -30 °C / +120 °C |
| E7* | Q | U | G | E | Silicon carbide | Tungsten carbide | AISI 316 | EPDM | -30 °C / +120 °C |
| V6* | U | U | V | G | Tungsten carbide | Tungsten carbide | AISI 316 | FKM | -10 °C / +120 °C |
| V8* | Q | U | V | G | Silicon carbide | Tungsten carbide | AISI 316 | FKM | -10 °C / +120 °C |

* Available in balanced version "B..." (ex. E1 - standard version --> BE1 - balanced version)

| Type | Material |
|------|------------------|
| B | Graphite |
| E | EPDM |
| G | AISI 316 |
| Q | Silicon carbide |
| V | FKM |
| U | Tungsten carbide |