

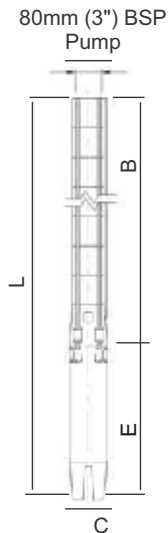


TYPICAL PERFORMANCE CURVE

TESTED ACCORDING TO ISO 9906 Annex A

PERFORMANCE 50Hz

SS642



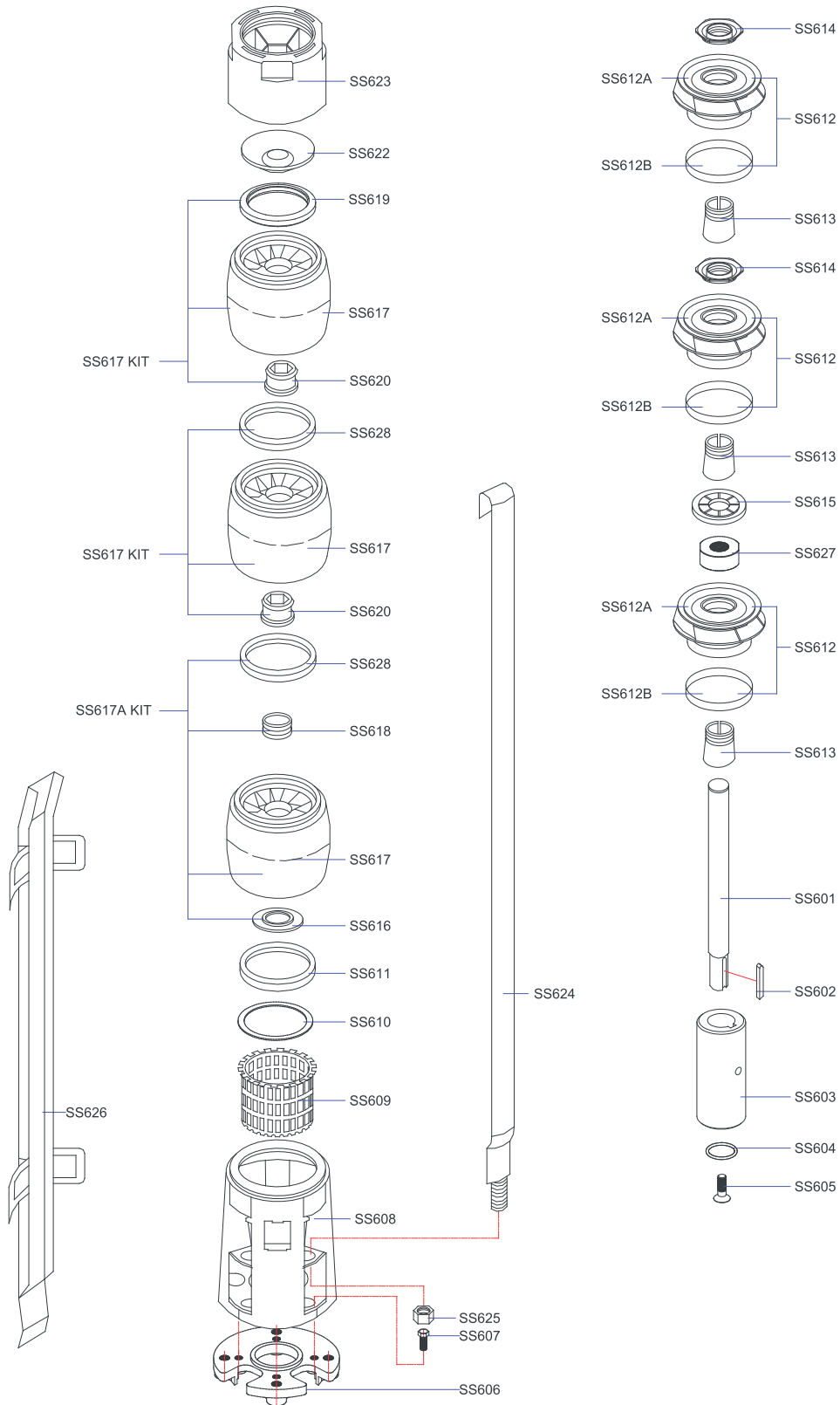
PUMP TYPE	MOTOR KW	DIMENSIONS (mm)															WEIGHT (kg)											
		150mm 100mm (6"-4")			150mm 200mm (6"-8")			100mm 150mm (4")			150mm 200mm (6")			100mm 150mm (4")			150mm 200mm (6")			MOTOR			PUMP			TOTAL		
		L	L	L	E	E	E	B	B	B	ø = C	ø = C	ø = C	ø PUMP	ø D	100mm (4")	150mm (6")	200mm (8")	150mm 100mm (6"-4")	150mm 150mm (6"-6")	150mm 200mm (6"-8")	150mm 100mm (6"-4")	150mm 150mm (6"-6")	150mm 200mm (6"-8")				
SS 642/01	1,5	817	-	-	432	-	-	385	-	-	98	-	-	145	3"	11	-	-	7	-	-	18	-	-				
SS 642/02	3	1079	-	-	581	-	-	498	-	-	98	-	-	145	3"	19	-	-	9	-	-	28	-	-				
SS 642/03	5,5	1351	1241	-	740	630	-	611	611	-	98	145	-	145	3"	25	46	-	11	12	-	36	58	-				
SS 642/04	7,5	1584	1374	-	860	650	-	724	724	-	98	145	-	145	3"	31	48	-	14	14	-	45	62	-				
SS 642/05	7,5	1697	1487	-	860	650	-	837	837	-	98	145	-	145	3"	31	48	-	16	16	-	47	64	-				
SS 642/06	9,2	-	640	-	-	690	-	-	950	-	-	-	-	145	-	-	-	-	-	-	18	-	-	68	-			
SS 642/07	11	-	1793	-	-	730	-	-	1063	-	-	-	-	145	-	-	-	-	-	20	-	-	-	76	-			
SS 642/08	15	-	1956	-	-	780	-	-	1176	-	-	-	-	145	-	-	-	-	-	22	-	-	-	82	-			
SS 642/09	15	-	2119	-	-	830	-	-	1289	-	-	-	-	145	-	-	-	-	-	24	-	-	-	90	-			
SS 642/10	15	-	2232	-	-	830	-	-	1402	-	-	-	-	145	-	-	-	-	-	26	-	-	-	92	-			
SS 642/11	18,5	-	2395	-	-	880	-	-	1515	-	-	-	-	145	-	-	-	-	-	29	-	-	-	101	-			
SS 642/12	18,5	-	2508	-	-	880	-	-	1628	-	-	-	-	145	-	-	-	-	-	31	-	-	-	103	-			
SS 642/13	22	-	2721	2700	-	980	930	-	1741	1770	-	145	195	145	3"	-	82	121	-	33	36	-	115	157				
SS 642/14	22	-	2834	2813	-	980	930	-	1854	1883	-	145	195	145	3"	-	82	121	-	35	38	-	117	159				
SS 642/15	22	-	2947	2926	-	980	930	-	1967	1996	-	145	195	145	3"	-	82	121	-	37	40	-	119	161				
SS 642/16	30	-	3110	3149	-	1030	1040	-	2080	2109	-	145	195	145	3"	-	88	140	-	39	42	-	127	182				
SS 642/17	30	-	3223	3262	-	1030	1040	-	2193	2222	-	145	195	145	3"	-	88	140	-	41	44	-	129	184				
SS 642/18	30	-	3416	3375	-	1110	1040	-	2306	2335	-	145	195	145	3"	-	98	140	-	43	46	-	141	186				
SS 642/19	30	-	3529	3488	-	1110	1040	-	2419	2448	-	145	195	145	3"	-	98	140	-	45	49	-	143	189				
SS 642/20	30	-	3658	3617	-	1110	1040	-	2548	2577	-	145	195	145	3"	-	98	140	-	48	51	-	146	191				
SS 642/21	37	-	3851	3760	-	1190	1070	-	2661	2690	-	145	195	145	3"	-	106	146	-	50	53	-	156	199				
SS 642/22	37	-	3964	3873	-	1190	1070	-	2774	2803	-	145	195	145	3"	-	106	146	-	53	56	-	159	202				
SS 642/23	37	-	4077	3986	-	1190	1070	-	2887	2916	-	145	195	145	3"	-	106	146	-	55	58	-	161	204				
SS 642/24	37	-	4190	4099	-	1190	1070	-	3000	3029	-	145	195	145	3"	-	106	146	-	57	60	-	163	206				
SS 642/25	37	-	4303	4212	-	1190	1070	-	3113	3142	-	145	195	145	3"	-	106	146	-	59	62	-	165	208				

PUMP TYPE	MOTOR		Total Dynamic Head (TD H)												
	0	36	38	40	42	44	46	48	50	52	54	56	58		
	m³/h	0	10	10,5	11,11	11,67	12,22	12,78	13,33	13,89	14,44	15,00	15,56	16,11	
	KW	l / sec	0,00	10,00	10,5	11,11	11,67	12,22	12,78	13,33	13,89	14,44	15,00	15,56	16,11
SS 642/01	1,5		13	10	10	9	9	9	9	8	8	8	7	7	6
SS 642/02	3		26	20	19	19	18	18	17	17	16	16	15	14	12
SS 642/03	5,5		39	29	29	28	27	26	26	25	24	23	22	20	19
SS 642/04	7,5		52	39	38	37	36	35	34	33	32	31	29	27	25
SS 642/05	7,5		65	49	48	47	46	44	43	42	40	39	37	34	31
SS 642/06	9,2		78	59	57	56	55	53	51	50	48	47	44	41	37
SS 642/07	11		91	69	67	65	64	62	60	58	56	55	51	48	43
SS 642/08	15		104	78	76	74	73	70	68	66	64	62	58	54	50
SS 642/09	15		117	88	86	84	82	79	77	75	72	70	66	61	56
SS 642/10	15		130	98	95	93	91	88	85	83	80	78	73	68	62
SS 642/11	18,5		143	108	105	102	100	97	94	91	88	86	80	75	68
SS 642/12	18,5		156	118	114	112	109	106	102	100	96	94	88	82	74
SS 642/13	22		169	127	124	121	118	114	111	108	104	101	95	88	81
SS 642/14	22		182	137	133	130	127	123	119	116	112	109	102	95	87
SS 642/15	22		195	147	143	140	137	132	128	125	120	117	110	102	93
SS 642/16	30		208	157	152	149	146	141	136	133	128	125	117	109	99
SS 642/17	30		221	167	162	158	155	150	145	141	136	133	124	116	105
SS 642/18	30		234	176	171	167	164	158	153	149	144	140	131	122	112
SS 642/19	30		247	186	181	177	173	167	162	158	152	148	139	129	118
SS 642/20	30		260	196	190	186	182	176	170	166	160	156	146	136	124
SS 642/21	37		273	206	200	195	191	185	179	174	168	164	153	143	130
SS 642/22	37		286	216	209	205	200	194	187	183	176	172	161	150	136
SS 642/23	37		299	225	219	214	209	202	196	191	184	179	168	156	143
SS 642/24	37		312	235	228	223	218	211	204	199	192	187	175	163	149
SS 642/25	37		325	245	238	233	228	220	213	208	200	195	183	170	155

DATE: 17/02/2016

CURVE NO. SST009







TYPICAL PERFORMANCE CURVE

TESTED ACCORDING TO ISO 9906 Annex A

PERFORMANCE 50Hz

SS636-SS642-SS660

Part No	Description	Material
SS601	Shaft	Stainless steel / (AISI 420)
SS602	Key	Stainless steel / (AISI 304)
SS603	Coupling	Stainless steel / (AISI 420)
SS604	O-Ring	Rubber
SS605	Coupling Screw	Stainless steel / (AISI 304)
SS606	Flange	Stainless steel / (AISI 304)
SS607	Flange Screw	Stainless steel / (AISI 304)
SS608	Support	Stainless steel / (AISI 304)
SS609	Strainer	Stainless steel / (AISI 304)
SS610	Neck Ring Retainer	Stainless steel / (AISI 304)
SS611	Support Neck Ring	Rubber / Steel
SS612A	Impeller	Stainless steel / (AISI 304)
SS612B	Ring Of Impeller	Stainless steel / (AISI 304)
SS613	Split Cone	Stainless steel / (AISI 420)
SS614	Split Cone Nut	Stainless steel / (AISI 304)
SS615	Spacing Washer For Stop Ring	Composite
SS616	Stop Ring	Stainless steel / (AISI 420)
SS617	Diffuser	Stainless steel / (AISI 304)
	Diffuser	Stainless steel / (AISI 304)
SS617A KIT	Bearing	Rubber / Steel
	Neck Ring	Rubber / Steel
	Stop Ring	Stainless steel / (AISI 420)
	Diffuser	Stainless steel / (AISI 304)
SS617 KIT	Bearing	Rubber
	Neck Ring	Rubber / Steel
	Diffuser	Stainless steel / (AISI 304)
SS617 B KIT	Bearing	Rubber
	Valve Seat	Rubber / Steel
SS618	Bearing	Rubber / Steel
SS619	Valve Seat	Rubber / Steel
SS620	Bearing	Rubber
SS622	Valve Cone	Stainless steel / (AISI 304)
SS623	Discharge (3" Normal)	Stainless steel / (AISI 304)
SS623-A	Discharge (NPT - Rp 3)	Stainless steel / (AISI 304)
SS623-B	Discharge (4" Normal)	Stainless steel / (AISI 304)
SS623-C	Discharge (NPT - Rp 4)	Stainless steel / (AISI 304)
SS624	Strap	Stainless steel / (AISI 304)
SS625	Strap Nut	Stainless steel / (AISI 304)
SS626	Cable Guard	Stainless steel / (AISI 304)
SS627	Lock Nut	Stainless steel / (AISI 420)
SS628	Neck Ring	Rubber / Steel

DATE: 17/02/2016

CURVE NO. SSS004



Franklin Electric